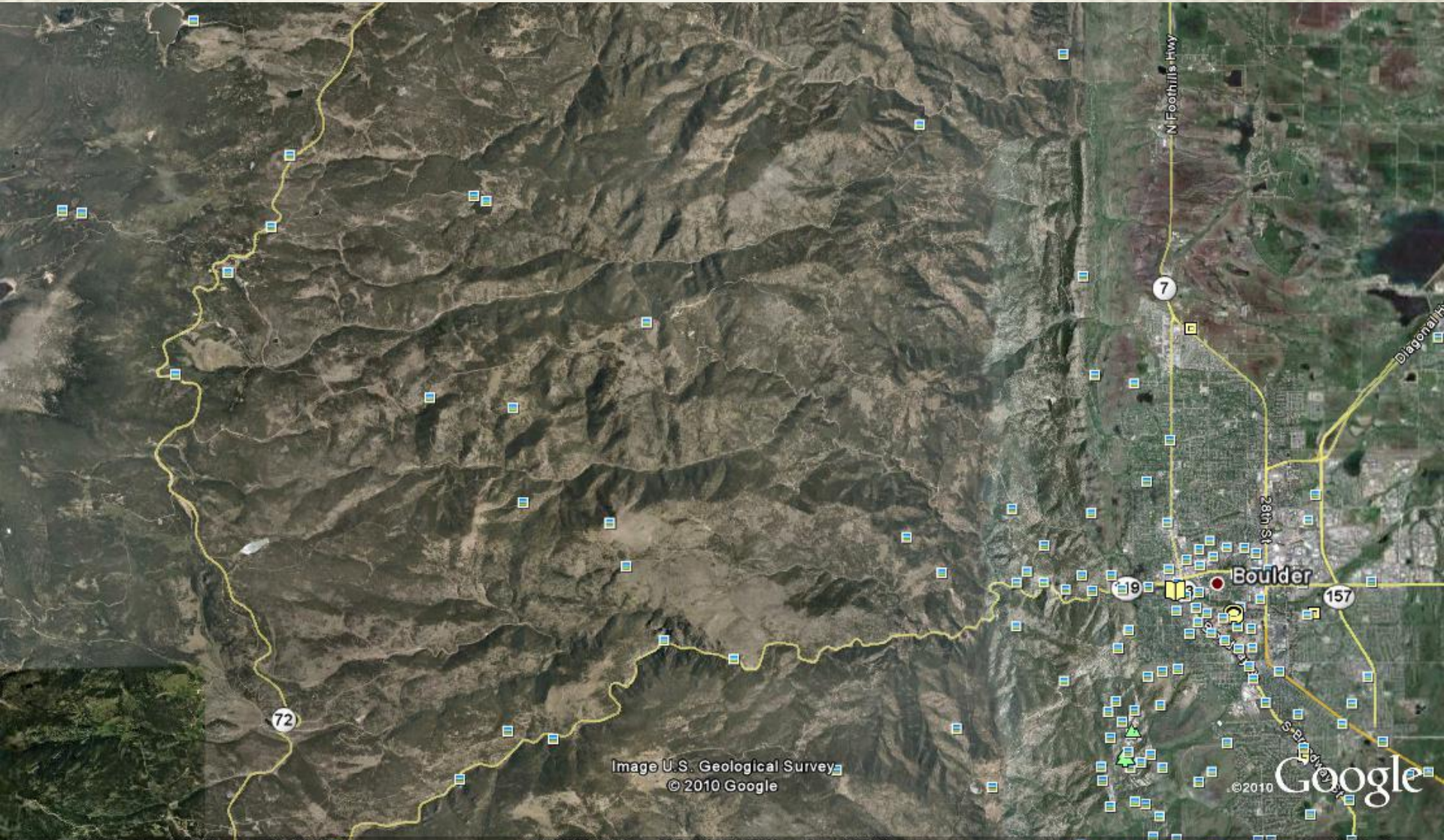




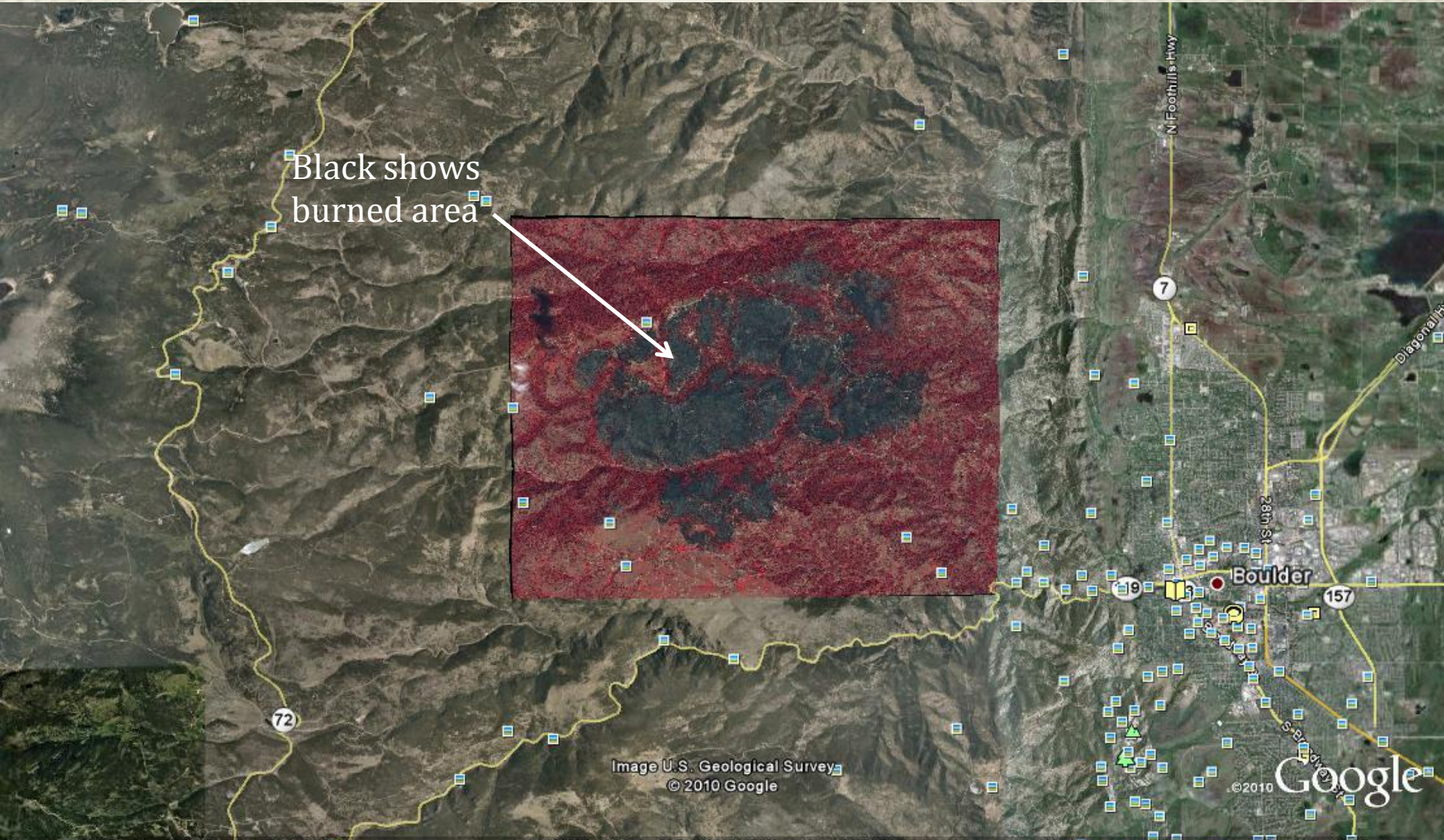
Mitigation Works

FOUR MILE FIRE

FOOTHILLS WEST OF BOULDER



THE FOURMILE FIRE BURN AREA



OUR HOUSE BEFORE THE FIRE



BEFORE THE FIRE AERIAL VIEW

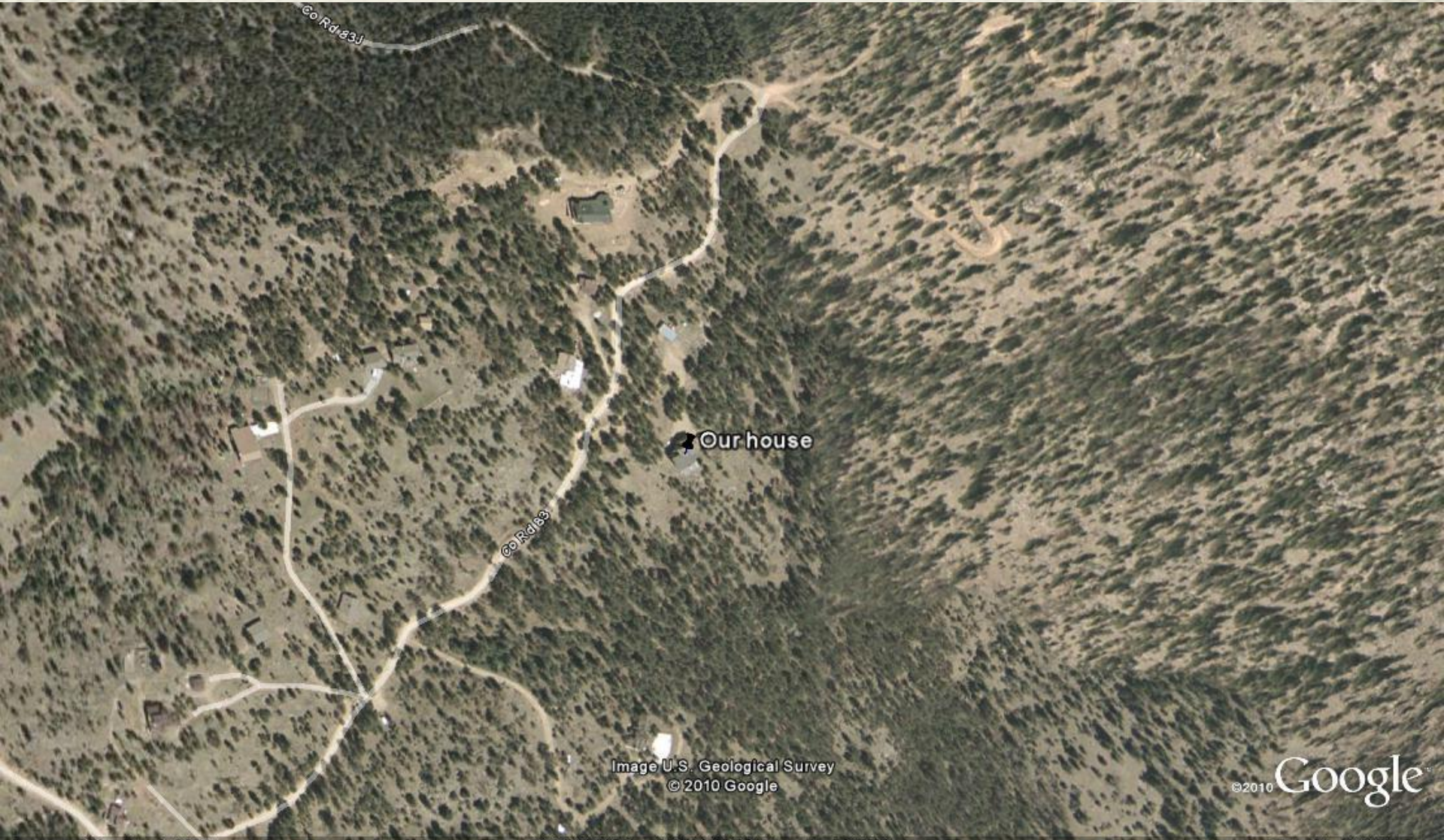


Image U.S. Geological Survey
© 2010 Google

© 2010 Google

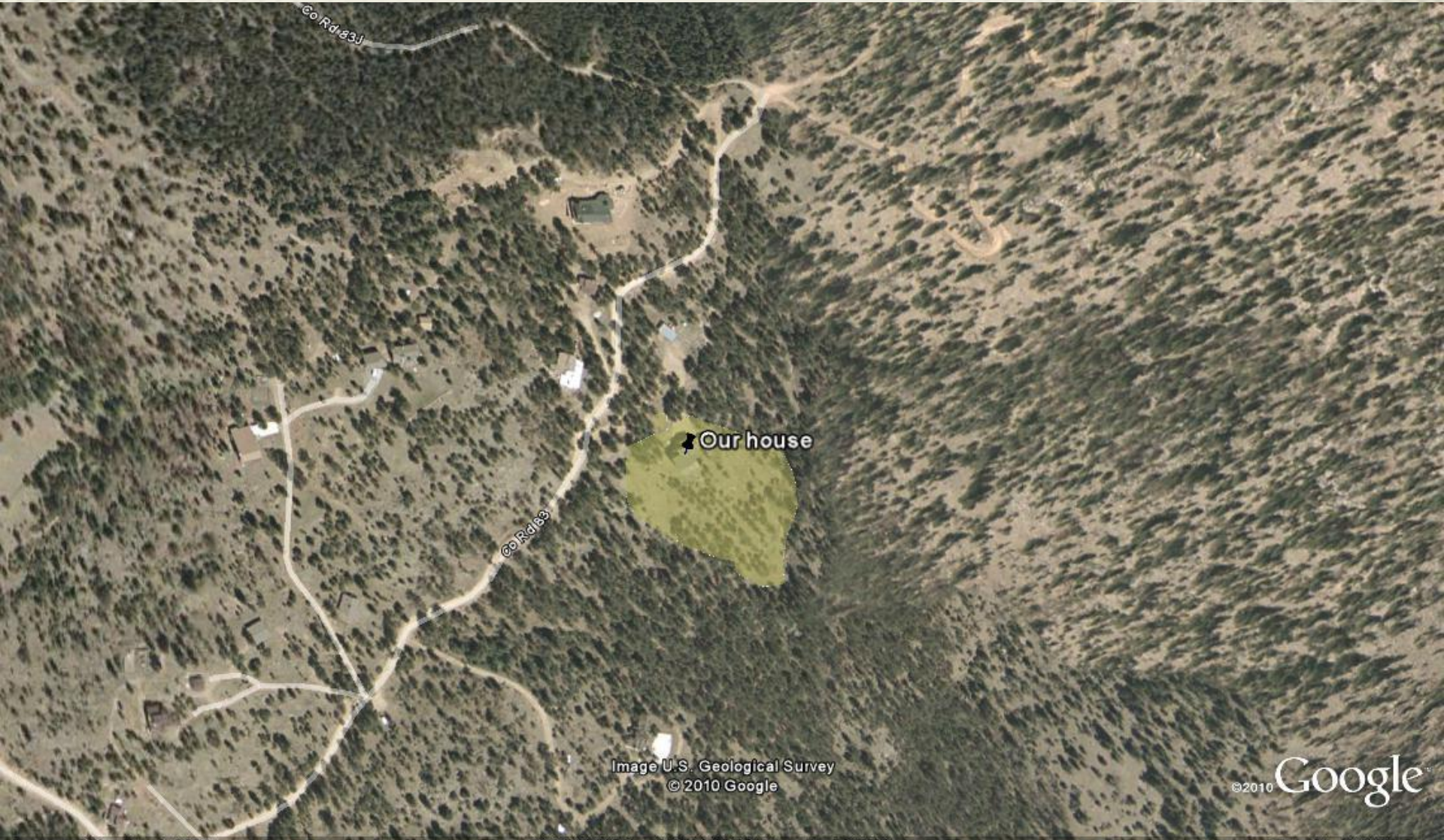
THINNED TREES AND CANOPY BREAKS



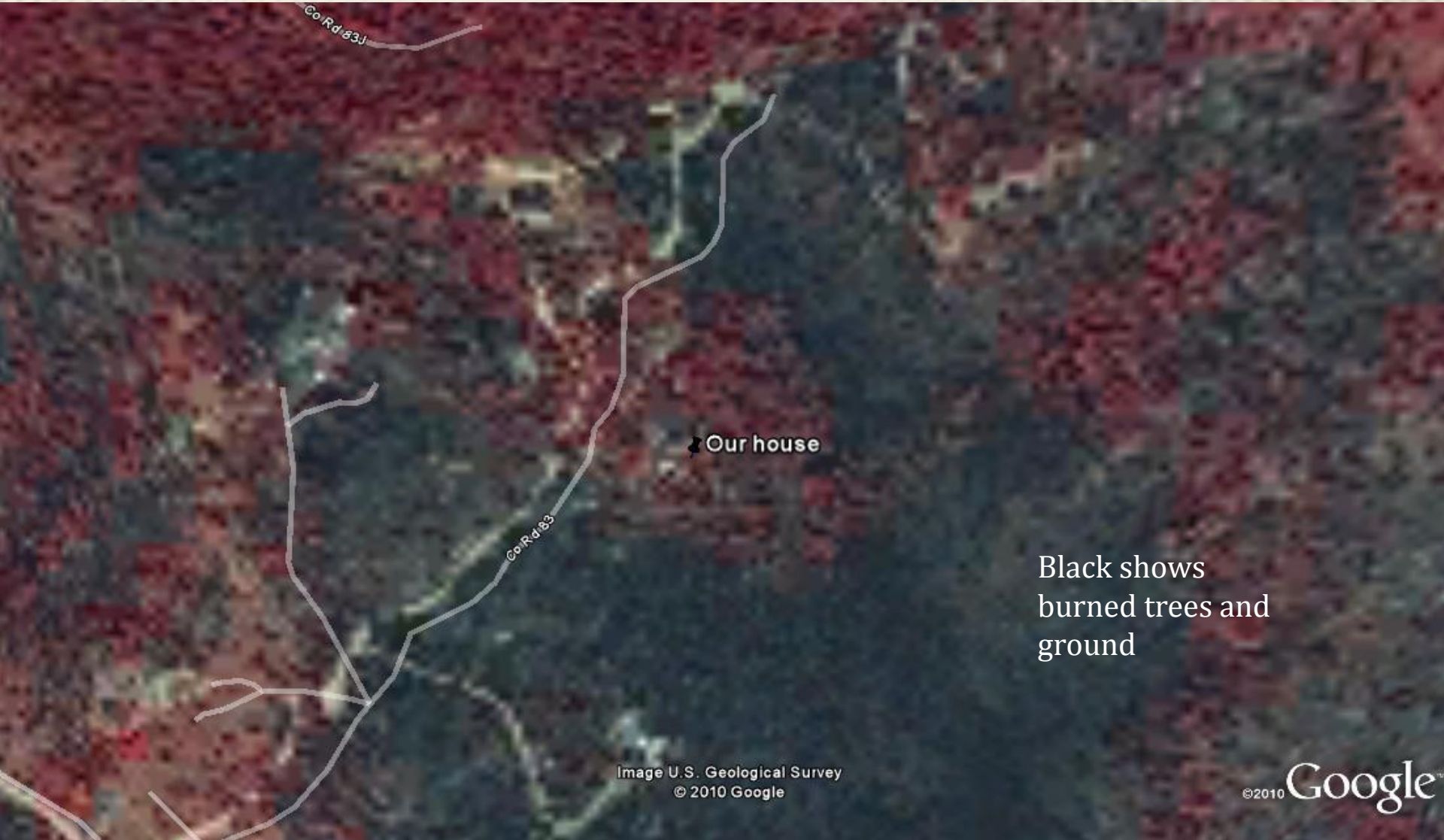
Image U.S. Geological Survey
© 2010 Google

©2010 Google™

AREA MITIGATED AROUND HOUSE



MITIGATED AREA UNBURNED



TREES NEXT TO HOUSE UNBURNED



Image U.S. Geological Survey
© 2010 Google

©2010 Google

LOCATION IN THE BURN AREA



TOO CLOSE FOR COMFORT



WHAT HELPED SAVE THE HOUSE

- × Thinning**
- × Canopy breaks**
- × Limbed-up trees**
- × Leaving trees near the house**
- × Removing flammables on and around decks**
- × Enclosed area under deck**
- × Cut grass around the house**

MITIGATION SPLIT THE HEAD OF THE FIRE

